

Logistics for Rent in Vignate

Rent

Ref. 96721

PRICE: Confidential
Negotiation



14.500 sq.m

Warehouse for rent in Piacenza (PC)
Logistics warehouse of approx. 18,560 approximately, offices of approx. 1,386 plus external area

We offer for rent, just 2 km from the Piacenza Sud exit, a property for logistics use of approx. 19,946, consisting of: warehouse of approx. 18,560 with a height under the beam of 8 meters plus offices of approx. 1,386 approx. N. 87 loading bays for trucks, n. 39 loading bays for vans and n. 1 flush door. Sprinkler system.

Property Informations

Local processing sq.m.: 18.560 sq.m

Office sq.m.: 1.386 sq.m

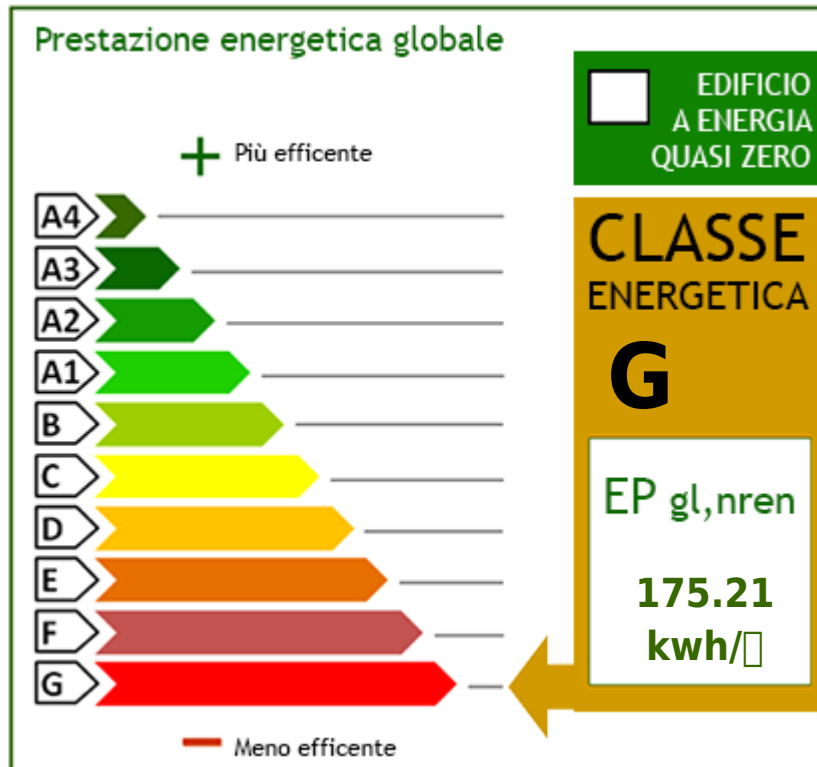
Features

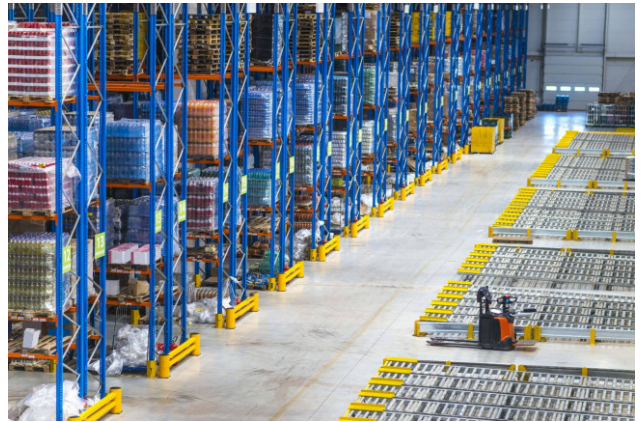
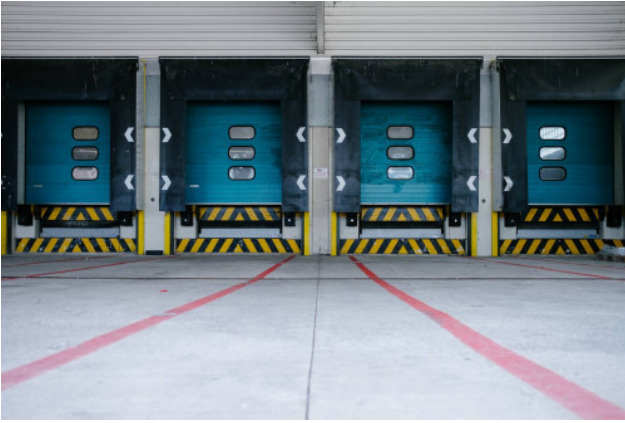
Air-Conditioned

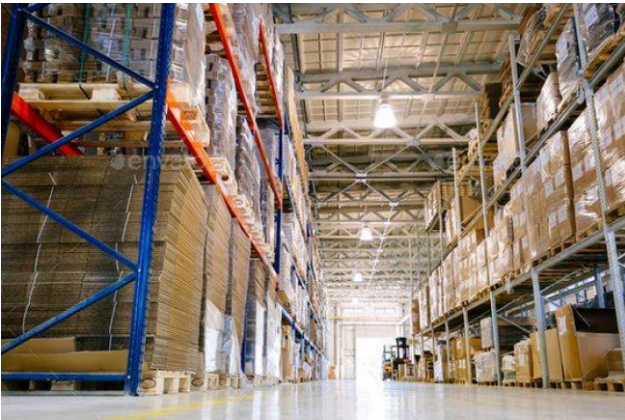
Alarm

Nearby

Gyms	wellness centres	Football Fields	Fitness Centers
Tennis Courts	Bike Lanes	Playgrounds	Railway Station
Public Transport	Kindergarten	Elementary Schools	Schools
High Schools	Cafe	Post Offices	Shopping Centers
Municipal Offices			









SOGIM srl

Via Margherita De Vizzi Viganò 93/95 - Cinisello Balsamo (MI) - Phone number 026607091
richieste@sogim.net - <https://www.sogim.net/en>
VAT 02533900961