

## Logistics for Rent in Lodi

Rent

Ref. C096703

PRICE: Confidential  
Negotiation



### 12.000 sq.m

Warehouse for rent in the immediate vicinity of Lodi (LO)  
Warehouse for logistics use of approx. 12,000 sq. m. with loading bays and offices

We offer for rent a newly built logistics warehouse, completed in 2024, with high construction standards and a privileged location. Located in a strategic area, the warehouse borders TEEM and offers quick access to the main roads. Just 22 km from Milan Airport, this solution is ideal for companies wishing to optimize logistics operations.

Main features:

Total area: Approximately 12,000 m<sup>2</sup>, of which approximately 1,500 m<sup>2</sup> are dedicated to offices. Internal height: 10 metres, ideal for flexible management of goods of different sizes. Loading bays: 18 truck loading bays and 28 van loading bays, designed to ensure quick and safe loading and unloading operations, optimising operational efficiency. Doors: 2 flush doors for easy access to loading vehicles. Photovoltaic system: 500 kWp photovoltaic system, supporting sustainable and eco-friendly operations. Floor load capacity: 5 t/m<sup>2</sup>, for safe management of heavy loads and bulky materials. Fire protection system: Sprinkler system compliant with NFPA standards, ensuring maximum protection and safety. Offices: Modern and functional office spaces, designed to optimise productivity and offer a comfortable working environment. Outdoor area: Large outdoor space for manoeuvring, parking and goods handling, with large yards that allow easy positioning of the means. Immediate delivery. This solution is ideal for companies that need large surfaces for logistics management and distribution. The property can be divided to adapt to different operational needs, offering flexibility to those who want

to expand or reduce space.

The experience gained over the years allows SOGIM Logistics Division to be positioned as an active part of this sector, offering cutting-edge solutions that are able to meet the multiple needs of the market.

The Logistics Division was born with the aim of marketing the main buildings for logistics use present in Milan, the hinterland and northern Italy through an intense and consolidated relationship with other operators, investors and builders.

The logistics division team has as its ultimate goal the complete satisfaction of the end users of the sector, guaranteeing a support of high technical-commercial knowledge in all contractual phases of the sale.

## Property Informations

**State of Preservation:** Excellent

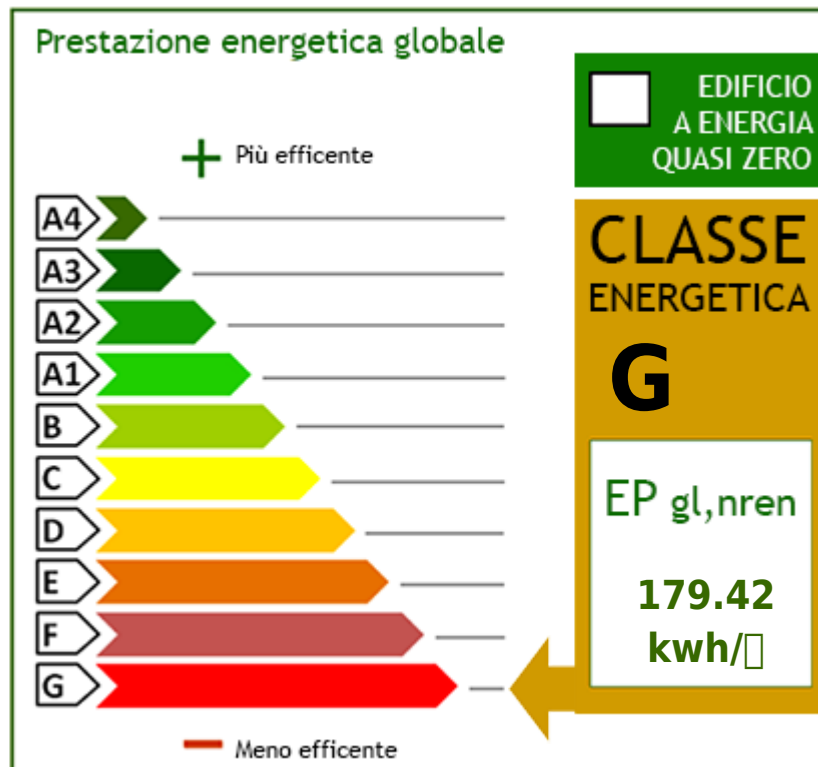
**Warehouse rooms sq.m.:** 23.000 sq.m

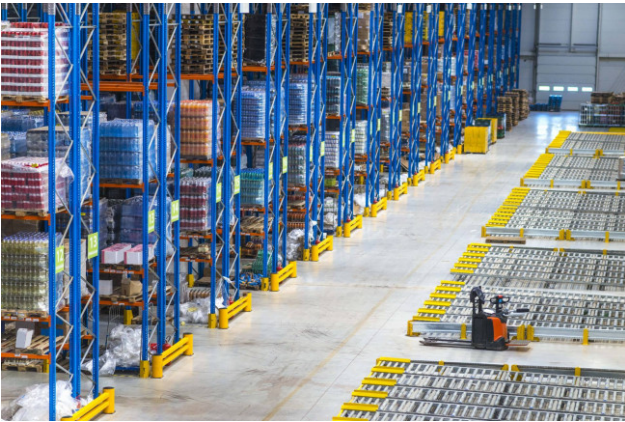
## Features

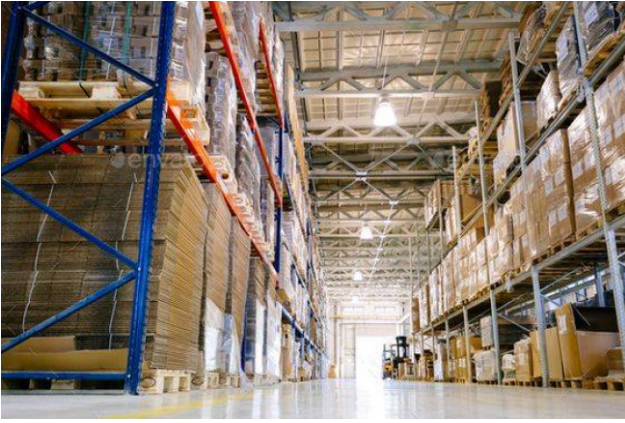
Alarm

## Nearby

Gyms	wellness centres	Football Fields	Fitness Centers
Tennis Courts	Bike Lanes	Playgrounds	Railway Station
Public Transport	Kindergarten	Elementary Schools	Schools
High Schools	Cafe	Post Offices	Shopping Centers
Municipal Offices			









**SOGIM srl**

Via Margherita De Vizzi Viganò 93/95 - Cinisello Balsamo (MI) - Phone number 026607091  
richieste@sogim.net - <https://www.sogim.net/en>  
VAT 02533900961