

Logistics for Rent in Monticelli d'Ongina

Rent

Ref. MI96699

PRICE: Confidential
Negotiation



23.000 sq.m

Warehouse for rent between Piacenza and Cremona
Warehouse for logistics use of approx. 23,000 sq. m. with loading bays and offices

We offer for rent a large warehouse for logistics use, located just 3.5 km from the A21 motorway exit, 80 km from Linate Airport and in a strategic position between Piacenza and Cremona. The property is easily accessible from the main roads, making it ideal for storage and distribution activities, with a project that optimizes logistics operations.

Main features:

Total area: Approximately 23,000 m², divided between warehouse and office areas. Internal height: Approximately 11.50 meters, perfect for handling large goods. Loading bays: 72 loading bays, designed for quick and safe loading and unloading operations. Floor capacity: 5 t/m², ensuring the ability to handle heavy loads safely. Sprinkler System: Fire prevention system compliant with NFPA standards, for optimal protection. Offices: Functional office spaces, designed to ensure a comfortable working environment. Outdoor area: Large outdoor space for maneuvering and parking. Photovoltaic system: Presence of a photovoltaic system to improve energy efficiency and promote greater sustainability.

This solution is particularly suitable for companies that require large surfaces for logistics management, with the possibility of dividing the property according to specific needs.

The experience gained over the years allows SOGIM Logistics Division to be positioned as an active part of this sector, offering cutting-edge solutions that are able to meet the multiple needs of the market.

The Logistics Division was born with the aim of marketing the main buildings for logistics use present in Milan, the hinterland and northern Italy through an intense and consolidated relationship with other operators, investors and builders.

The logistics division team has as its ultimate goal the complete satisfaction of the end users of the sector, guaranteeing a support of high technical-commercial knowledge in all contractual phases of the sale.

Property Informations

State of Preservation: Excellent

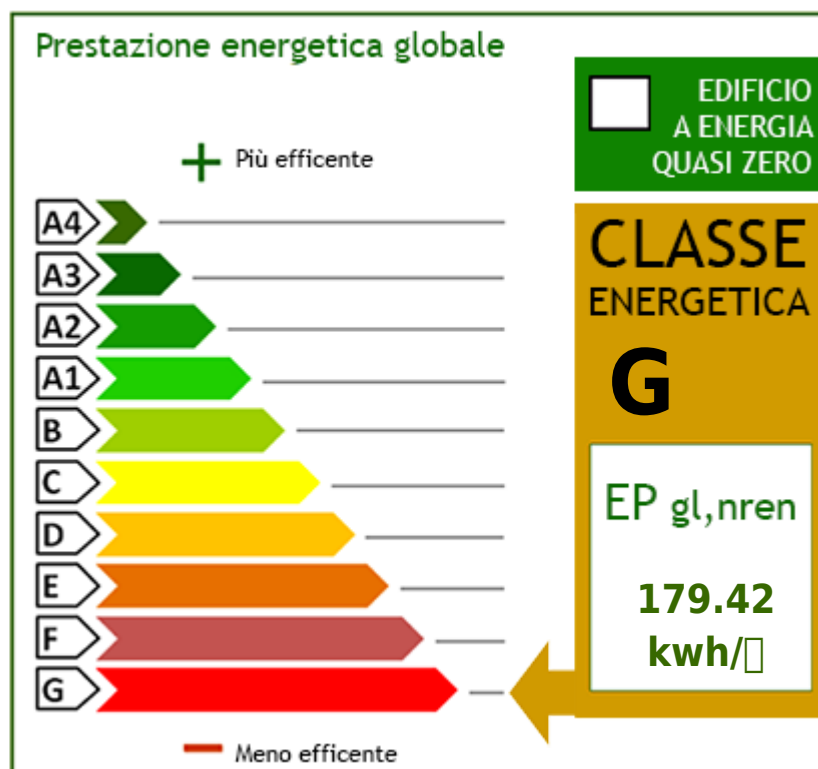
Warehouse rooms sq.m.: 23.000 sq.m

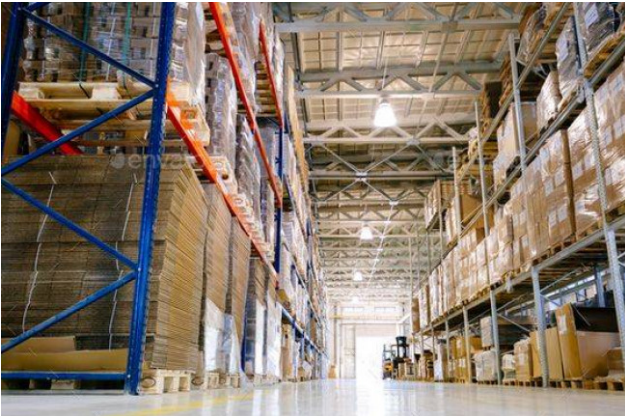
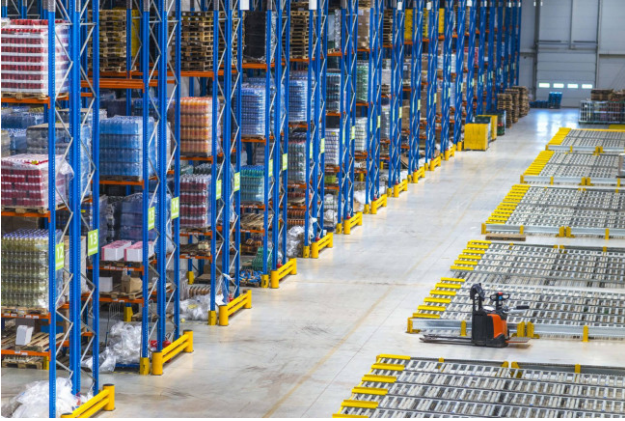
Features

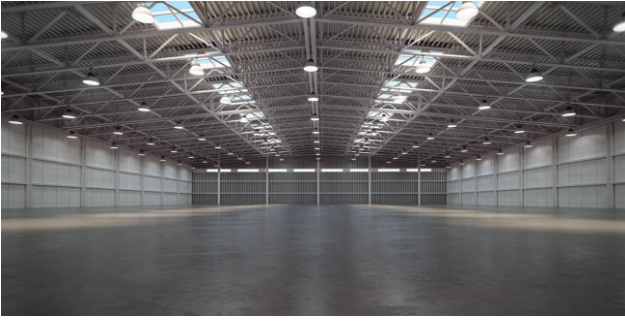
Alarm

Nearby

Gyms	wellness centres	Football Fields	Fitness Centers
Tennis Courts	Bike Lanes	Playgrounds	Railway Station
Public Transport	Kindergarten	Elementary Schools	Schools
High Schools	Cafe	Post Offices	Shopping Centers
Municipal Offices			









SOGIM srl

Via Margherita De Vizzi Viganò 93/95 - Cinisello Balsamo (MI) - Phone number 026607091
richieste@sogim.net - <https://www.sogim.net/en>
VAT 02533900961