

Logistics for Rent in Parma

Rent

Ref. 26634

PRICE: Confidential
Negotiation



40.000 sq.m

Warehouse for rent in the vicinity of the municipality of Parma (PR)
Warehouse for logistics use of approx. 40,000 sq. m. plus external area and offices. Loading bays

We offer for rent, near the municipality of Parma, convenient to the main roads, a warehouse for logistics use of 40,000 square meters with the possibility of subdividing with an internal height of 11 meters approx. loading bays. Offices. Outdoor area.

The experience gained over the years allows SOGIM Logistics Division to be positioned as an active part of this sector, offering cutting-edge solutions that are able to meet the multiple needs of the market.

The Logistics Division was born with the aim of marketing the main buildings for logistics use present in Milan, the hinterland and northern Italy through an intense and consolidated relationship with other operators, investors and builders.

The logistics division team has as its ultimate goal the complete satisfaction of the end users of the sector, guaranteeing a support of

high technical-commercial knowledge in all contractual phases of the sale.

Property Informations

State of Preservation: Excellent

Warehouse rooms sq.m.: 40.000 sq.m

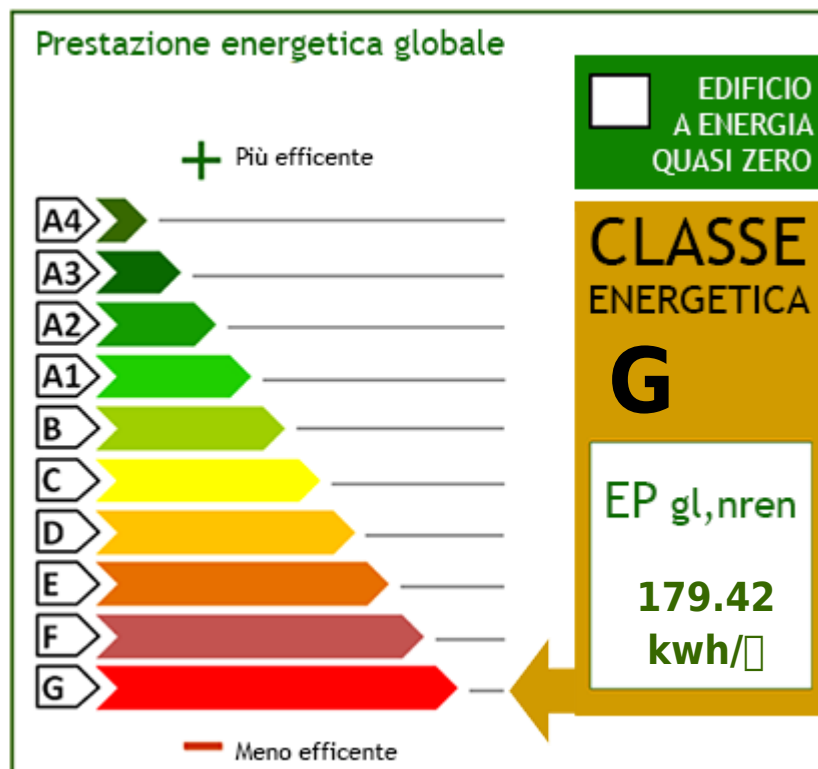
Features

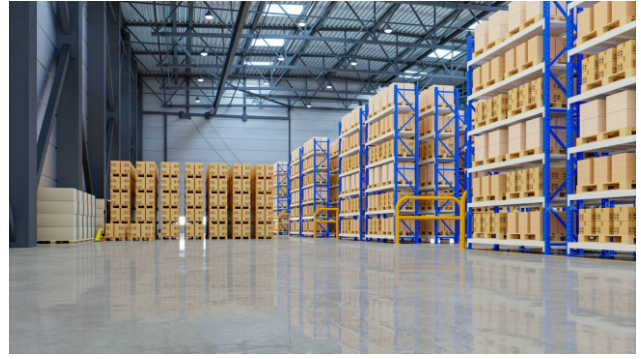
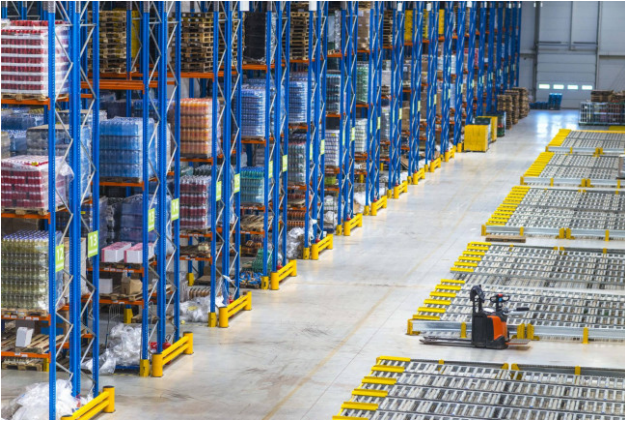
Air-Conditioned

Alarm

Nearby

Gyms	wellness centres	Football Fields	Fitness Centers
Tennis Courts	Bike Lanes	Playgrounds	Railway Station
Public Transport	Kindergarten	Elementary Schools	Schools
High Schools	Cafe	Post Offices	Shopping Centers
Municipal Offices			







SOGIM srl

Via Margherita De Vizzi Viganò 93/95 - Cinisello Balsamo (MI) - Phone number 026607091
richieste@sogim.net - <https://www.sogim.net/en>
VAT 02533900961



SOGIM srl

Via Margherita De Vizzi Viganò 93/95 - Cinisello Balsamo (MI) - Phone number 026607091
richieste@sogim.net - <https://www.sogim.net/en>
VAT 02533900961