

Logistics for Rent in Suzzara

Rent

Ref. 23338

PRICE: € 75.000



15.000 sq.m

Logistics warehouse for rent near the municipality of Mantua (MN)
Warehouse for logistics use of approx. 15,000 approx and loading bays

We offer for rent, near the municipality of Mantua (MN), convenient to the main road arteries, a newly built property for logistical use of approx. Approximately 15,000 with loading bays plus offices. Internal height 11.25 m. Flush doors. NFPA sprinklers. Railway connection.

Certification

Energy Class: A3

Property Informations

Warehouse rooms sq.m.: 14.500 sq.m

Office sq.m.: 500 sq.m

Features

Air-Conditioned

Alarm

Nearby

Gyms

wellness centres

Football Fields

Fitness Centers

Tennis Courts

Bike Lanes

Playgrounds

Railway Station

Public Transport

Kindergarten

Elementary Schools

Schools

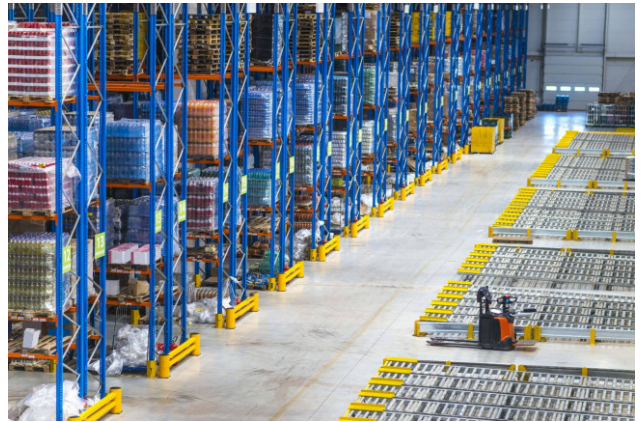
High Schools

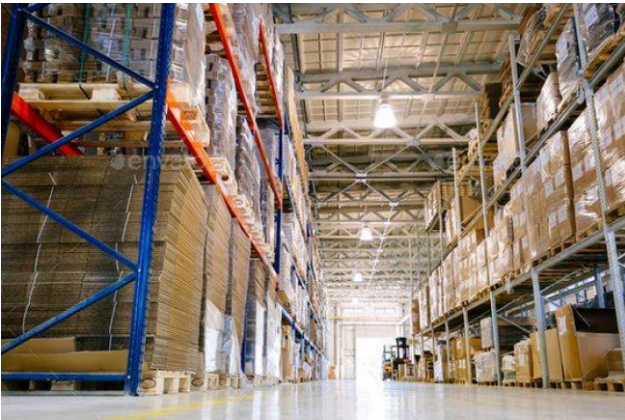
Cafe

Post Offices

Shopping Centers

Municipal Offices







SOGIM srl

Via Margherita De Vizzi Viganò 93/95 - Cinisello Balsamo (MI) - Phone number 026607091
richieste@sogim.net - <https://www.sogim.net/en>
VAT 02533900961