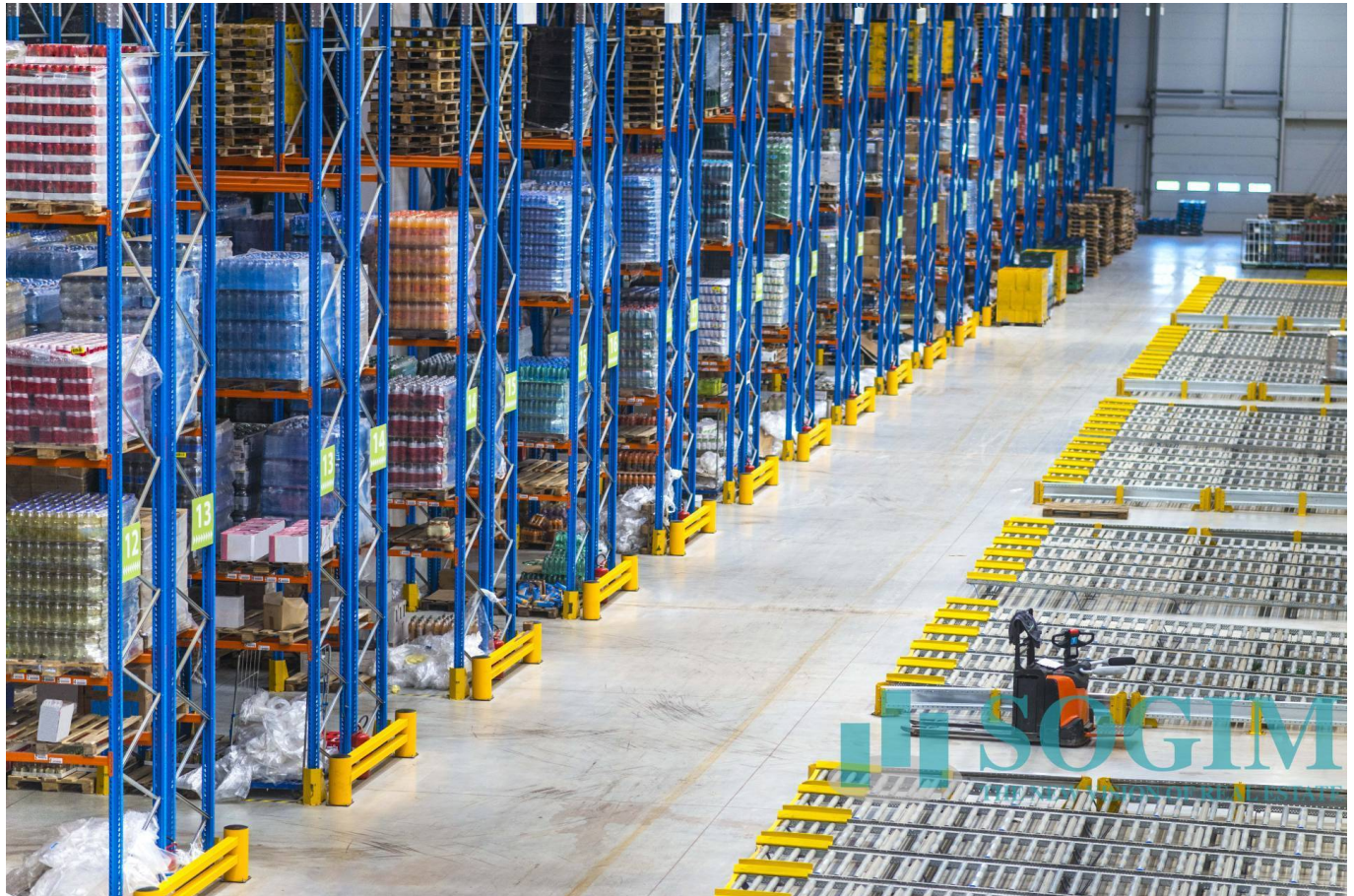


Logistics for Rent in Rolo

Rent

Ref. 246109

PRICE: € 23.000



4.521 sq.m

Logistics warehouse for rent in the municipality of Rolo (RE)
Warehouse for logistics use of approx. 4,521 approximately and n. 2 loading bays

We offer for rent, near the municipality of Rolo (RE), convenient to the main road arteries and a few kilometers from the entrance to the A22 motorway, a property for logistics use of approx. 4,081 approximately with n. 2 loading bays. Internal height 10.50 m. N. 1 flush door. Sprinklers.

Property Informations

State of Preservation: Good

Local processing sq.m.: 4.081 sq.m

Office sq.m.: 440 sq.m

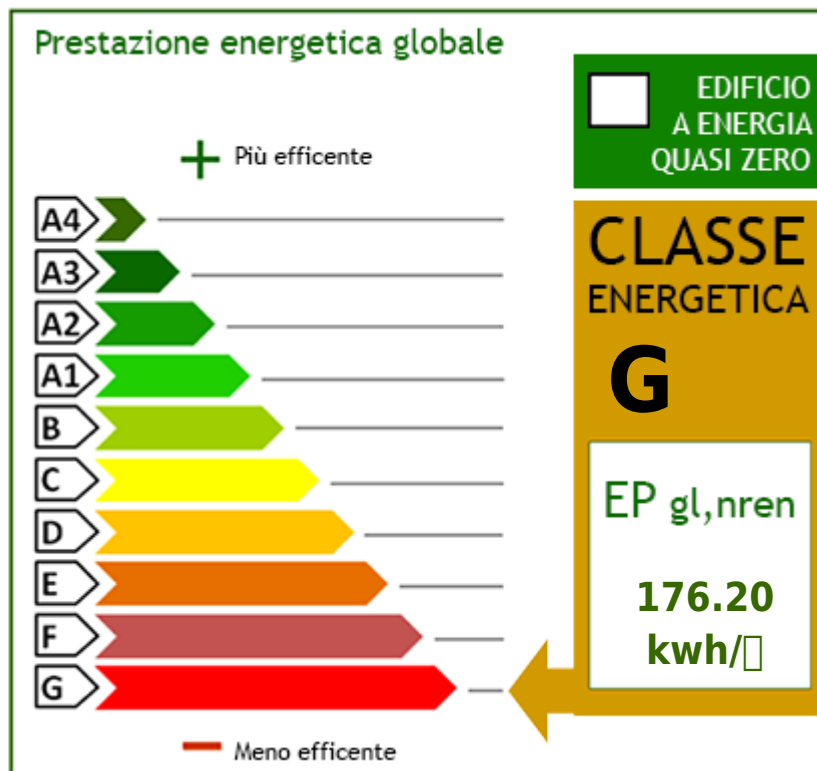
Features

Air-Conditioned

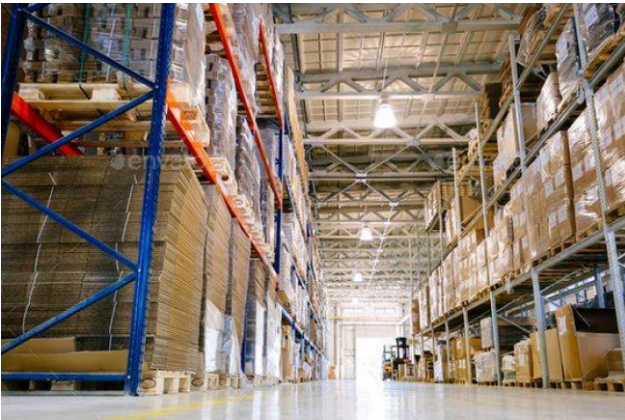
Alarm

Nearby

| | | | |
|-------------------|------------------|--------------------|------------------|
| Gyms | wellness centres | Football Fields | Fitness Centers |
| Tennis Courts | Bike Lanes | Playgrounds | Railway Station |
| Public Transport | Kindergarten | Elementary Schools | Schools |
| High Schools | Cafe | Post Offices | Shopping Centers |
| Municipal Offices | | | |









SOGIM srl

Via Margherita De Vizzi Viganò 93/95 - Cinisello Balsamo (MI) - Phone number 026607091
richieste@sogim.net - <https://www.sogim.net/en>
VAT 02533900961