

## Logistics for Rent in Piacenza

Rent

Ref. 24667

PRICE: Confidential  
Negotiation



### 23.000 sq.m

Warehouse for rent near the municipality of Piacenza (PC)

Warehouse for logistics use of approx. 20,724 sq. m. plus external area of approx. 17,000 sq. m. and offices of approx. 2,382 sq. m.  
Loading bays

We offer for rent, near the municipality of Piacenza (PC), convenient to the main roads, a warehouse of approx. 20,724 sq m with an internal height of 12 m, consisting of: warehouse of approx. 20,724 sq m. 72 loading bays. Offices of approx. 2,382 sq m. External area of approx. 17,000 sq m. Sprinkler.

The experience gained over the years allows SOGIM Logistics Division to be positioned as an active part of this sector, offering cutting-edge solutions that are able to meet the multiple needs of the market.

The Logistics Division was born with the aim of marketing the main buildings for logistics use present in Milan, the hinterland and northern Italy through an intense and consolidated relationship with other operators, investors and builders.

The logistics division team has as its ultimate goal the complete satisfaction of the end users of the sector, guaranteeing a support of high technical-commercial knowledge in all contractual phases of the sale.

## Property Informations

State of Preservation: Good

Warehouse rooms sq.m.: 20.724 sq.m

Office sq.m.: 2.382 sq.m

Uncovered area sq.m.: 17.000 sq.m

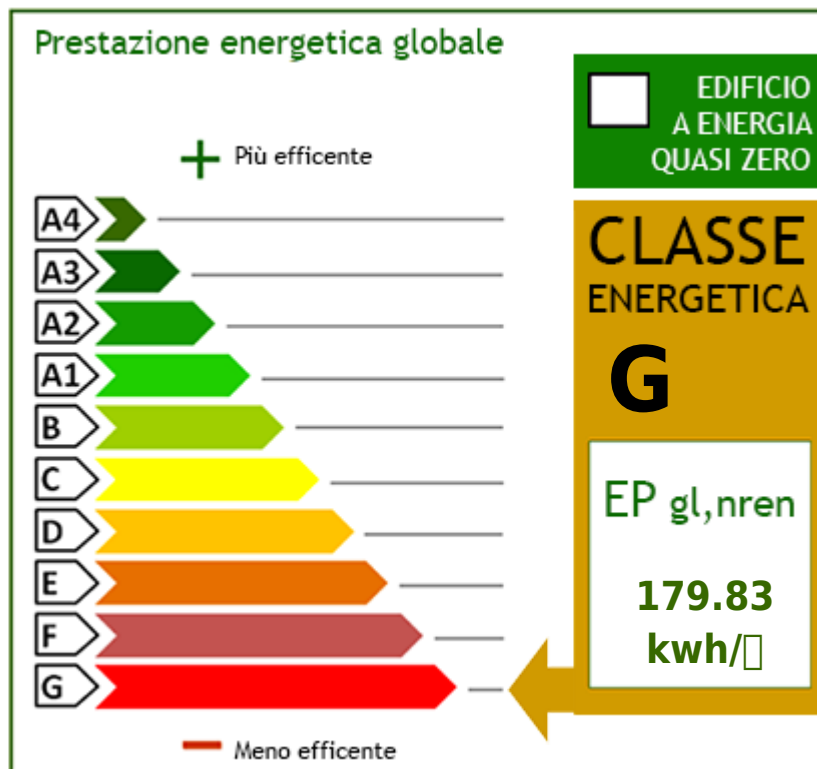
## Features

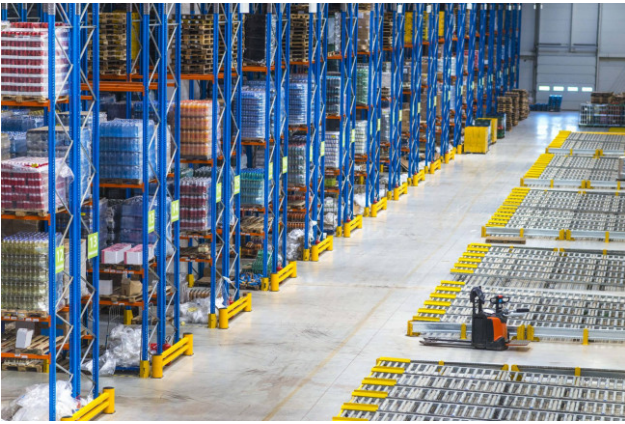
Air-Conditioned

Alarm

## Nearby

Gyms	wellness centres	Football Fields	Fitness Centers
Tennis Courts	Bike Lanes	Playgrounds	Railway Station
Public Transport	Kindergarten	Elementary Schools	Schools
High Schools	Cafe	Post Offices	Shopping Centers
Municipal Offices			









**SOGIM srl**

Via Margherita De Vizzi Viganò 93/95 - Cinisello Balsamo (MI) - Phone number 026607091  
richieste@sogim.net - <https://www.sogim.net/en>  
VAT 02533900961